



## FK24 Replacement Blower Kit Installation Instructions | MC1927



### RISK OF FIRE AND ELECTRIC SHOCK!

Before installing the blower, turn off both the gas supply and electrical power.  
Ensure that any excess cord is secured and kept away from hot surfaces or moving parts.

Before installing the blower kit, ensure that the bottom area in your fireplace is free of drywall dust or debris. Cleaning this area is important, as these conditions can damage the bearings or motor.

This blower kit has been tested and is safe for use when installed according to the provided instructions. Be sure to read all instructions carefully and refer to the Owner's Installation Manual for your specific model of fireplace for additional information. The blower operates on a 120V/60Hz power supply.

### Installation

#### Check the contents of the carton.

Make sure nothing was damaged in the shipment.

#### DO NOT install a damaged blower kit!

1. Turn Off the gas to Fireplace and allow it to cool down.
2. Disconnect from 120V Power. Shut off the Gas supply.
3. Remove the louver which covers the lower vent space below the firebox.
4. Plug Power Cord into "Live" Outlet. Test Blower operation by placing flame to Silver Disc of Heat Sensor for 10 seconds. Verify Speed Control in "ON" Position.

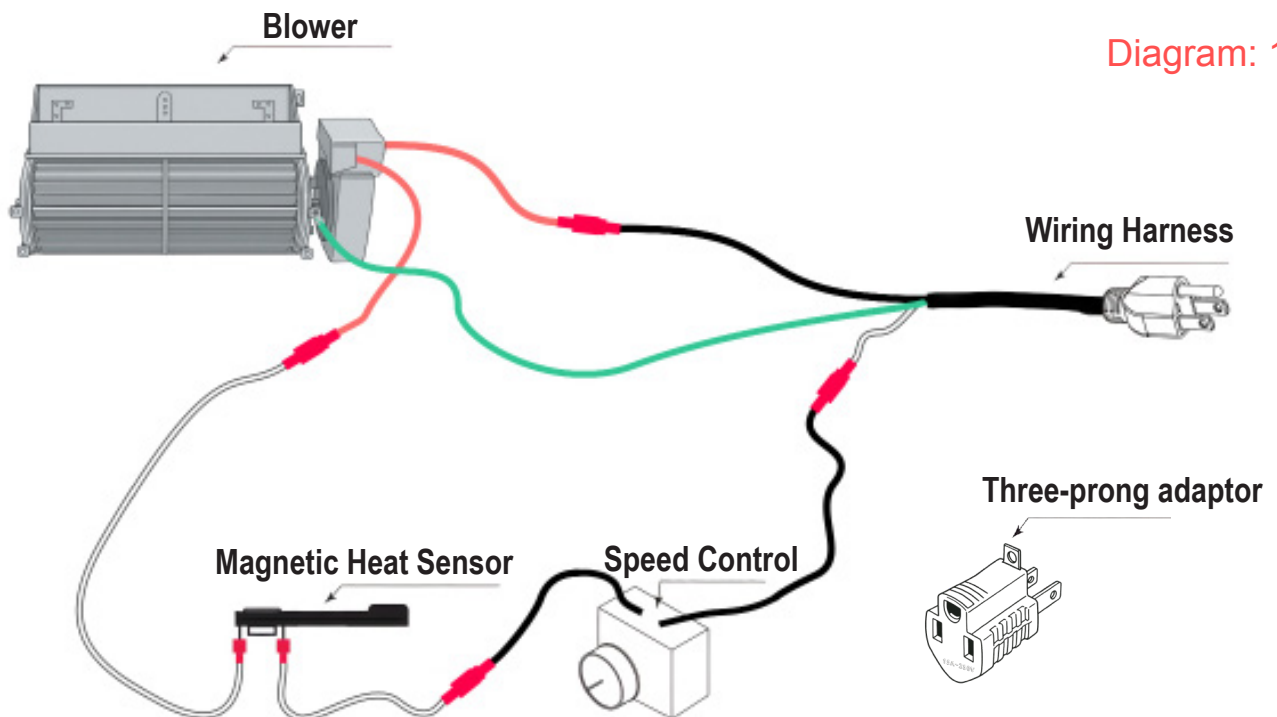


Diagram: 1

Note: You may not need all parts included with this kit.

## Prepare Mounting Area

Clean the surface beneath the firebox where the fan will be mounted.

## Plan Blower Pathway

Determine a clear path for the blower assembly to reach the back of the unit.

## Position the Blower Assembly

Hold the blower so the fan blades are facing upward and the motor is oriented away from the fireplace.

## Install the Blower

Carefully slide the blower assembly through the bottom vent opening. As it approaches the back of the unit, align it parallel to the rear wall. Rotate the blower so the rectangular air outlet port is facing upward.

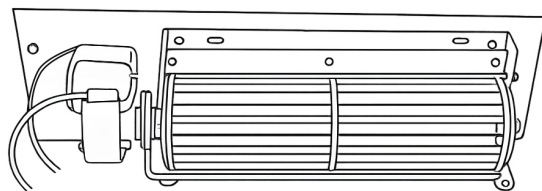
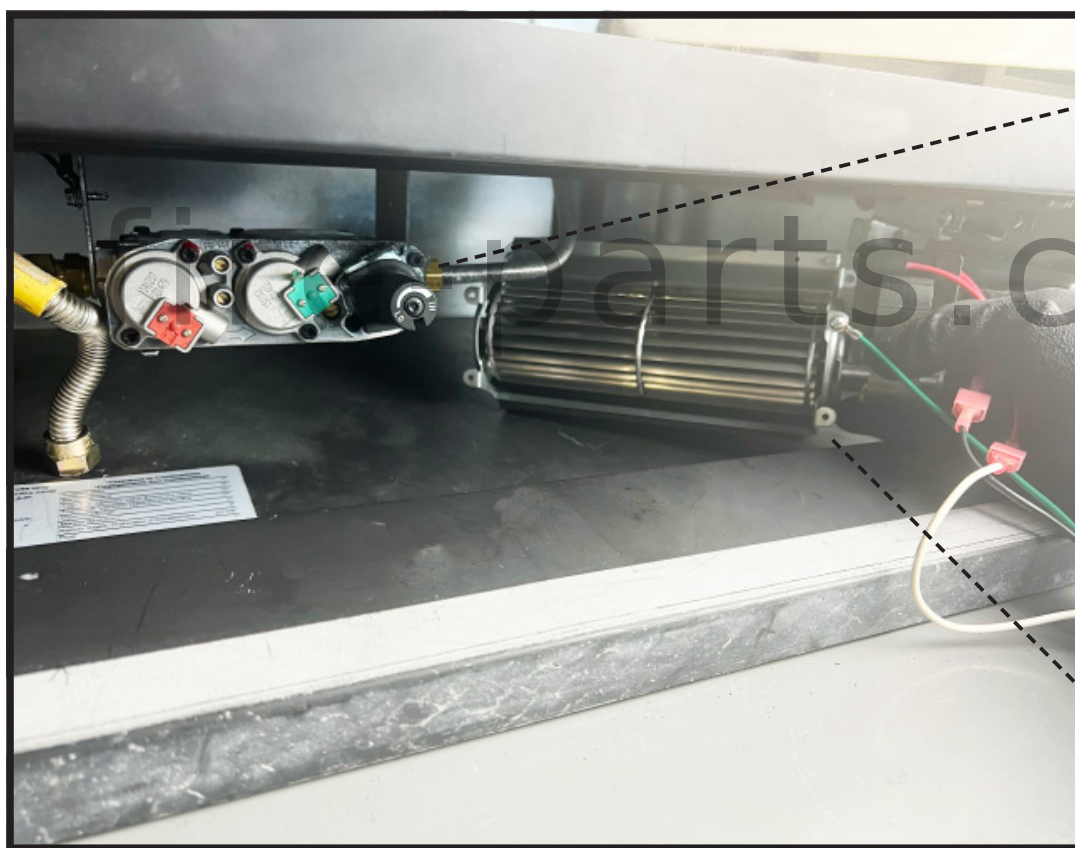


Diagram: 2

It does not matter which metal tab the black and white wires are connected to—either tab can be used for either wire.



Gas Valve

Diagram: 3

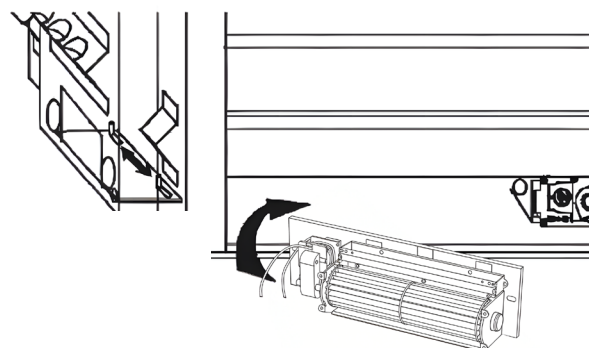
Blower

## Installing the Blower on the Fireplace Bracket

Center the vibration-reducing pad over the two threaded studs and press it down, creating holes in the pad to allow the studs to pass through. Ensure the pad is fully seated and properly aligned.

The blower must be positioned entirely on the pad for effective vibration isolation. Tilt the blower onto its side and carefully slide it past the controls. Align the blower bracket slots with the threaded studs.

The blower bracket is slotted to allow adjustment away from the designated gas supply hole. Once positioned correctly, secure the blower in place using the provided lock washers and wing nuts.



### Wire Harness and Blower Operation:

The wire harness included in this kit is a universal type. During installation, ensure that any excess wiring is neatly secured and does not come into contact with hot surfaces or moving parts.

The blower is thermally activated and will automatically turn on approximately 15–30 minutes after the fireplace is lit. It will continue to operate for about 30–45 minutes after the fireplace has been turned off.

Using the blower enhances heat distribution and increases the overall heat output of the fireplace.

#### Important:



The blower will not operate until both of the following conditions are met

- The thermodisc (heat sensor) reaches approximately 120°F, and
- The variable speed control is turned to the ON position.

Make sure the thermodisc is properly placed against a hot spot on the underside of the firebox to ensure correct operation.

#### Note:

Motor City Blowers manufactures aftermarket fireplace blower kits. Always consult your fireplace's Owner's Installation Manual for model-specific instructions during installation or replacement. Motor City Blowers is not responsible for any damage resulting from installation based on this document.

Installations in Canada must comply with the current CAN/CGAB-419.1 and .Z Gas Installation Code, as well as all applicable local regulations. The blower fan kit must be electrically grounded in accordance with CSA C22.1, Canadian Electrical Code Part 1, and/or local codes.

Installations in the United States must adhere to local codes, or in the absence of local codes, to the National Fuel Gas Code ANSI Z223.1-1988. The blower fan kit must be electrically grounded in accordance with local regulations or, if none are available, with the National Electrical Code, ANSI/NFPA 70-1987.

fire-parts.com