

COMPATIBILITY

- 564 SS* • 864 TRV* • 864 HH • 864 ST* • 21 DV / TRV* • FPX 44 DV XXL • 36 DV XXL **
- DVS Insert EFII ('08 rev 2) • DVL Insert EFII ('08 rev 2) • Avalon Prairie* • Avalon Cedar* • Avalon Tree of Life*
- Lopi Berkshire* • Lopi Heritage • Lopi Sturbridge* • Lopi Sweet Dreams*

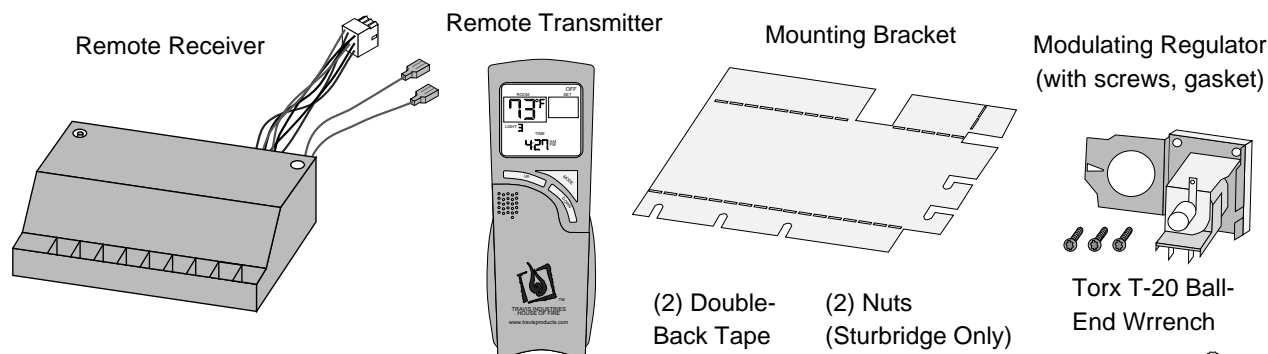
* Requires Optional Blower

** Requires an additional heat shield assembly (part # 250-01073)

ITEMS NEEDED FOR ASSEMBLY

- Two (2) AAA Batteries (sample batteries are included for set-up)

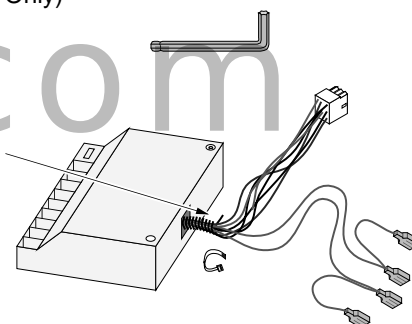
PACKING LIST



ANTENNA PLACEMENT

The receiver is shipped with the antenna wrapped around the wiring harness. In most installations, the receiver will work properly with the antenna left in this position. However, if you are experiencing inadequate radio range, you may wish to unwrap the antenna and place it in a position closer to the living area (see the illustration to the right).

The receiver antenna is wrapped around the wiring harness. To reposition the wire, carefully remove the lock-tie on the wiring harness and unwrap the wire.



FCC EQUIPMENT REQUIREMENTS

WARNING: Changes or modifications to this unit not expressly approved by the party responsible for compliance could void the user's authority to operate the equipment.

NOTE: This equipment has been tested and found to comply with the limits for a Class B digital device, pursuant to Part 15 of the FCC Rules. These limits are designed to provide reasonable protection against harmful interference in a residential installation. This equipment generates, uses, and can radiate radio frequency energy and, if not installed and used in accordance with the instructions, may cause harmful interference to radio communications. However, there is no guarantee that interference will not occur in a particular installation. If this equipment does cause harmful interference to radio or television reception, which can be determined by turning the equipment off and on, the user is encouraged to try to correct the interference by one or more of the following measures:

- Reorient or relocate the receiver.
- Increase the separation between the equipment and receiver.
- Connect the equipment into an outlet on a circuit different from that to which the receiver is connected.
- Consult the dealer or an experienced radio/TV technician for help.

INSTALLATION WARNINGS

- ! Place the remote receiver in the location detailed in these instructions. Placing the receiver in other locations may cause the receiver to become too hot and degrade.
- ! All 110 AC wiring must be done by a qualified electrician and shall be in compliance with local codes and the National Electric Code ANSI/NFPA no. 70 (in the United States).
- ! This kit must be installed by a qualified technician.
- ! Do not connect 110 VAC to the gas control valve or on/off switch.
- ! The remote control is carefully engineered and **MUST** be installed only as specified. It is tested safe when installed in accordance with this installation manual. If you modify it or any of its components, you may possibly cause a fire hazard. It is your responsibility to read all instructions before starting installation and to follow these instructions carefully during installation.
- ! Disconnect the power (turn off the household breaker) and shut off the gas supply to the heater before installing the remote control.



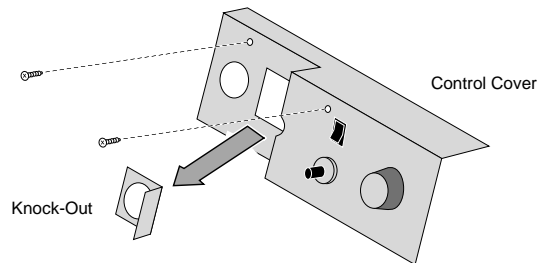
TRAVIS INDUSTRIES
HOUSE OF FIRE

Modulating Regulator Installation

Knock-Out Plate and Control Cover Removal

Certain models require removal of a knock-out plate on the control cover. See the illustration below for details.

Disconnect the control cover (exact design may differ - leave the wires attached).
Remove and discard the regulator knock-out (use tin snips or wire cutters). Replace the control cover after attaching the wiring.



Special Note for DVS Insert, DVL Insert, Tree of Life, and Berkshire

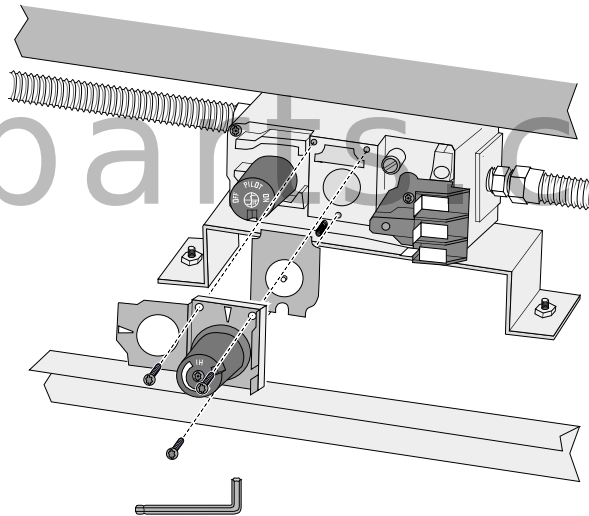
Attach the wires labeled "Solenoid" to the regulator prior to installing the regulator. See "Receiver Installation DVS and DVL Insert" for details.

HINT: You may wish to loosen the valve mount brackets to allow for better access.

Ⓐ

Remove the regulator using the included Torx T-20 Ball-End "L" wrench. Make sure to remove and discard the old gasket and spring.

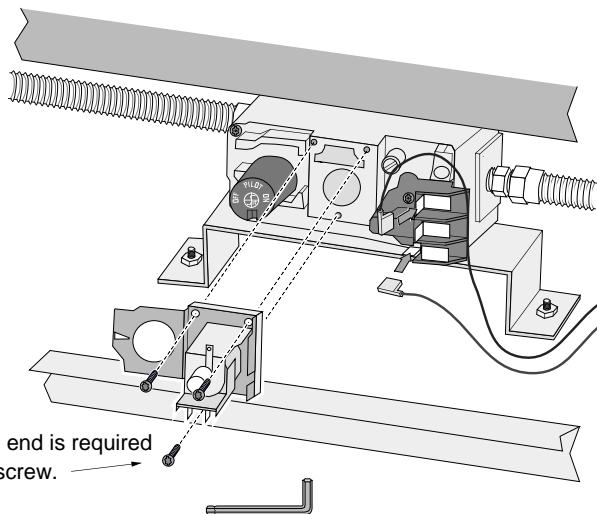
NOTE: this illustration shows the gas control valve with the inlet to the left. Certain models may have the valve rotated 180°.



Ⓑ

Place the modulating regulator (and gasket) on the valve. Insert the three screws included with the regulator into place. Tighten each screw in an alternating pattern to insure the regulator (and gasket) installs flat onto the valve. Fully tighten the screws (25 In.Lb.).

The ball end is required for this screw.



Ⓒ

Attach the two remote on/off wires (red and brown) from the wiring harness to the top and bottom terminals on the gas control valve (orientation does not matter).

Ⓓ

Start the main burner and thoroughly leak check the regulator area.

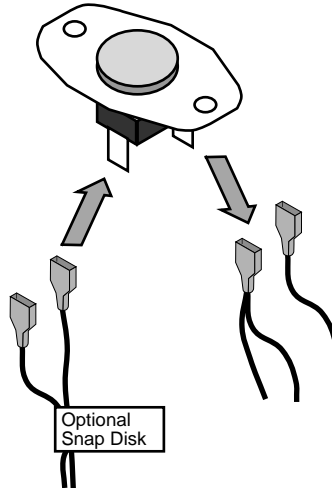


TRAVIS INDUSTRIES
HOUSE OF FIRE

Special Instructions for 44 DV, 36 DV, and 864HH (SN 3407-001010 or greater)

Installations Without the Power Heat Duct:

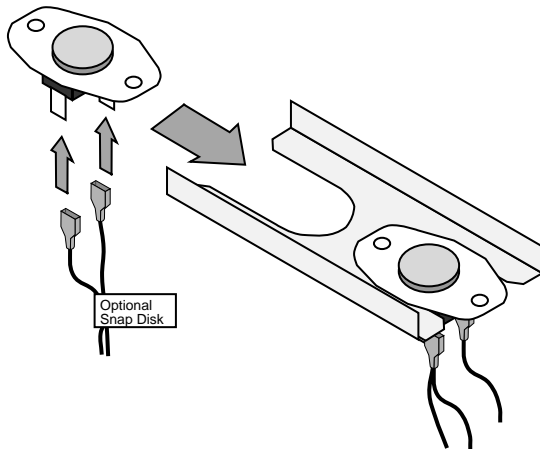
Remove the two wires currently connected to the snap disk on the fireplace. Attach the two wires labeled "Optional Snap Disk" to the snap disk (orientation does not matter).



Installations With the Power Heat Duct:

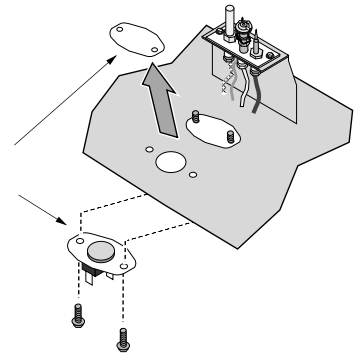
Attach the snap disk included with the power heat duct to the bottom of the firebox. Attach the two wires labeled "Optional Snap Disk" to this snap disk (orientation does not matter).

44 DV XXL or 36 DV XL

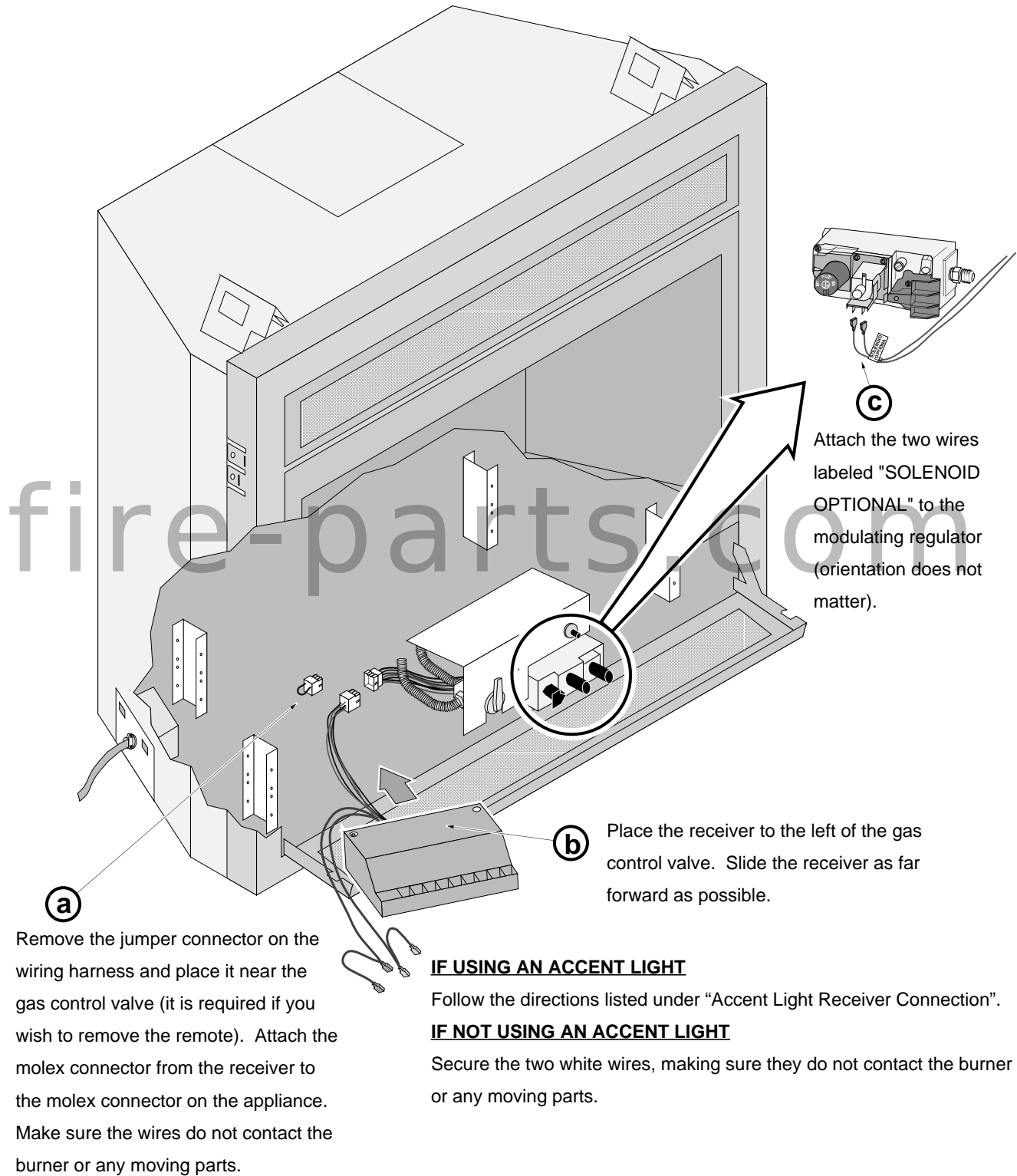


864 HH

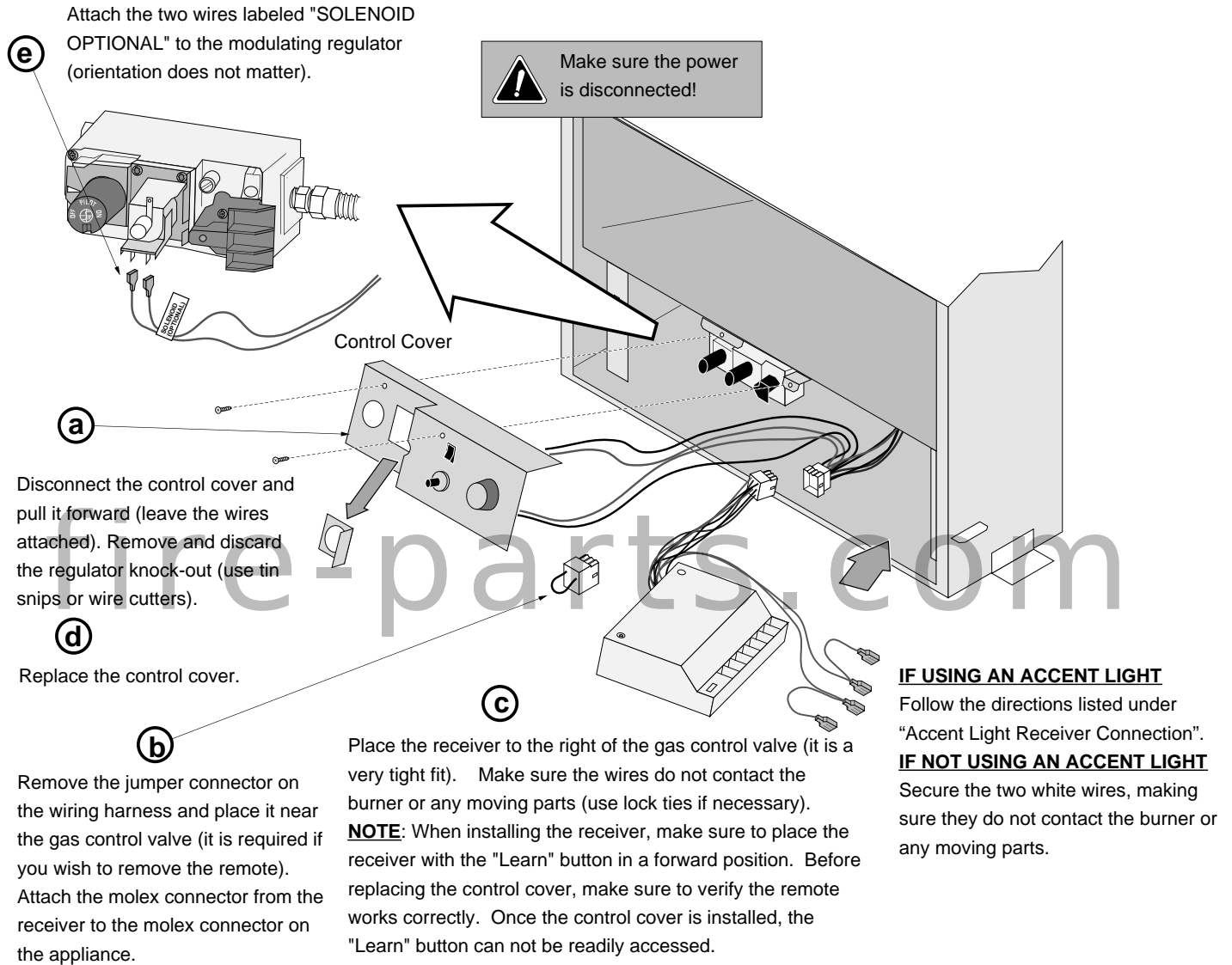
Remove this cover plate. Use the screws that held the cover plate in place to secure the snap disk (included with the power heat duct) to the firebox floor.



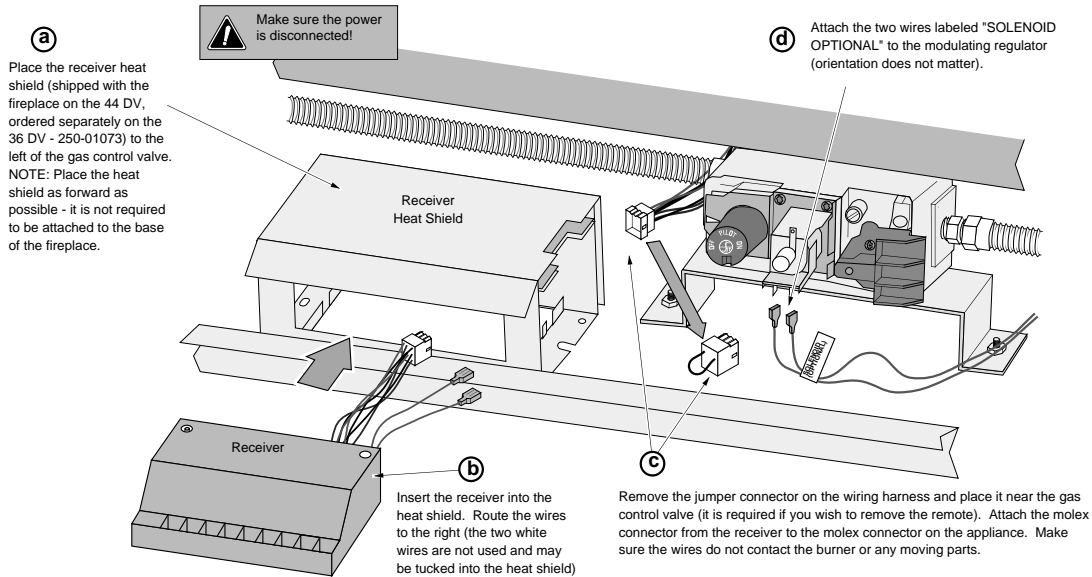
Receiver Installation – 864 TRV, 864 HH, 864 ST, or 564 SS



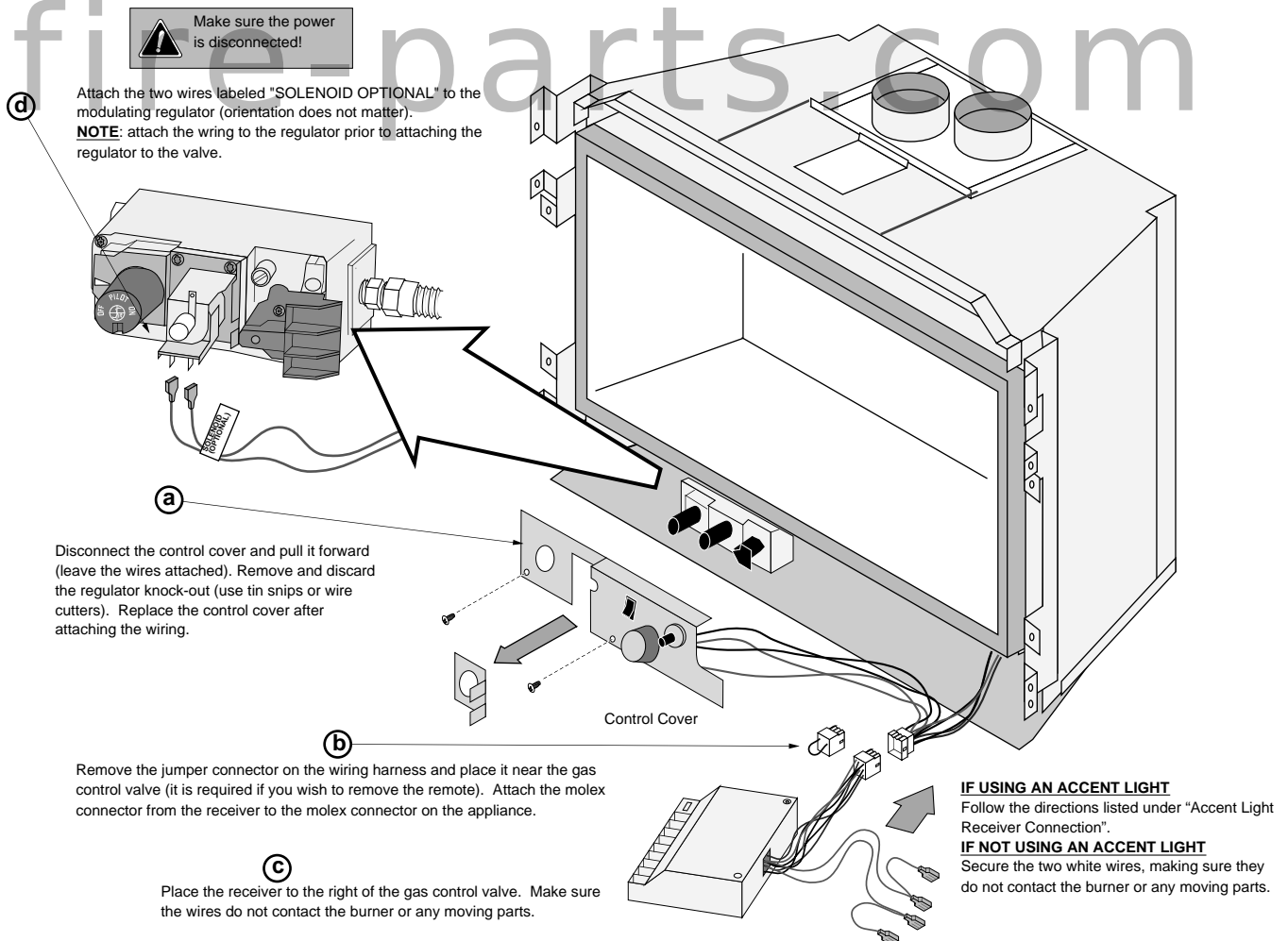
Receiver Installation – 21 DV, 21 TRV, and Sweet Dreams



Receiver Installation – 44 DV XXL and 36 DV XL



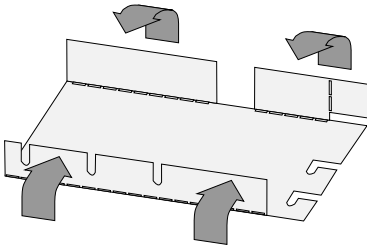
Receiver Installation – DVS and DVL Insert



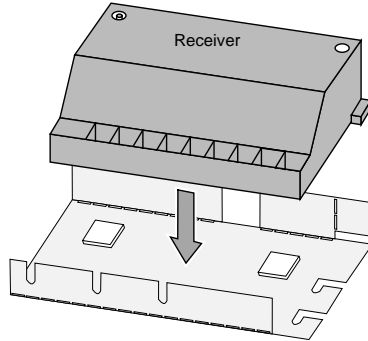
TRAVIS INDUSTRIES
HOUSE OF FIRE

Receiver Installation – Berkshire, Prairie, and Cedar

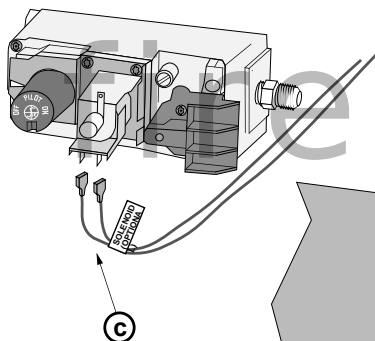
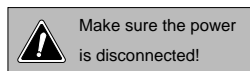
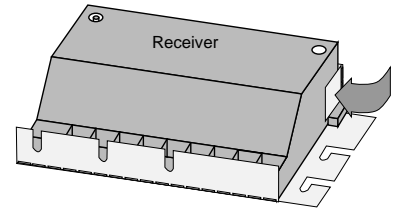
Bend the receiver bracket as shown below.



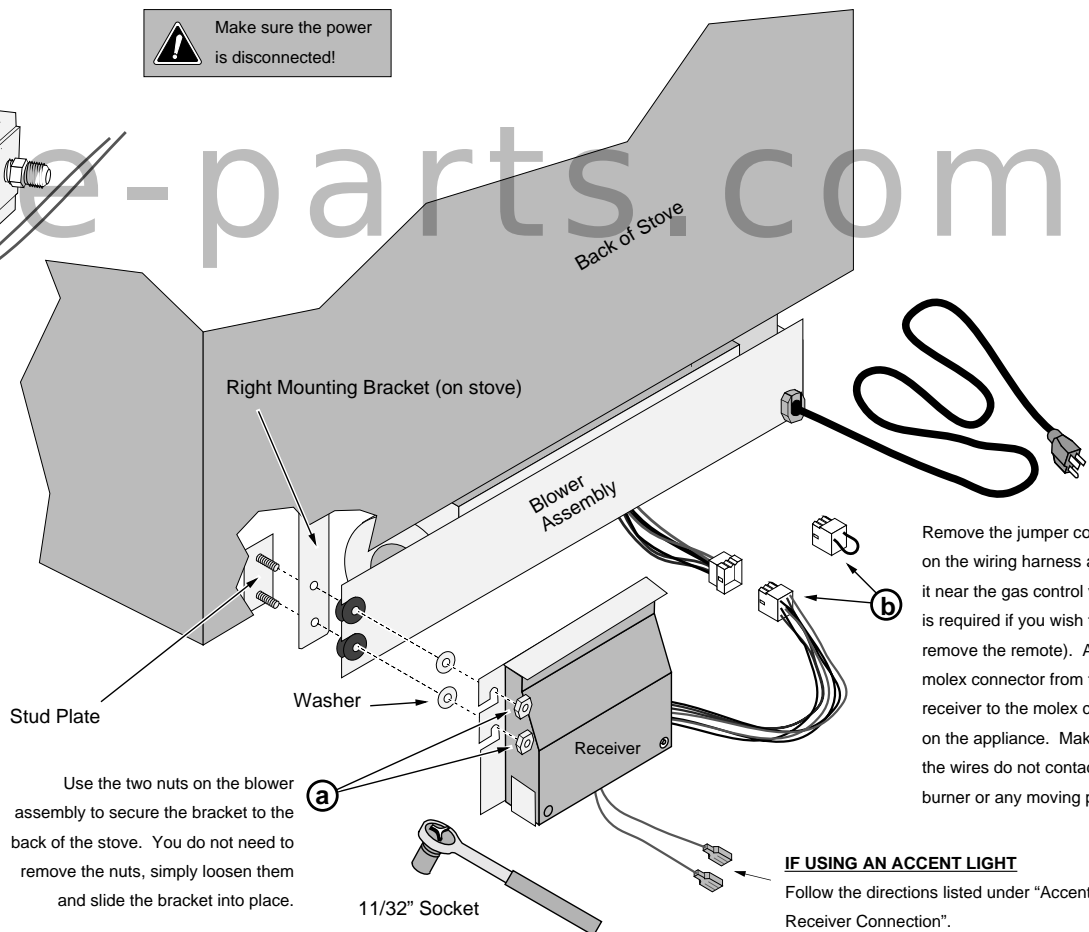
Attach the two pieces of double-sided tape to the bracket. Place the receiver as shown on top of the tape.



Bend the side tab inwards as shown below.



Attach the two wires labeled "SOLENOID" and "OPTIONAL" to the modulating regulator (orientation does not matter).



Use the two nuts on the blower assembly to secure the bracket to the back of the stove. You do not need to remove the nuts, simply loosen them and slide the bracket into place.

Remove the jumper connector on the wiring harness and place it near the gas control valve (it is required if you wish to remove the remote). Attach the molex connector from the receiver to the molex connector on the appliance. Make sure the wires do not contact the burner or any moving parts.

IF USING AN ACCENT LIGHT

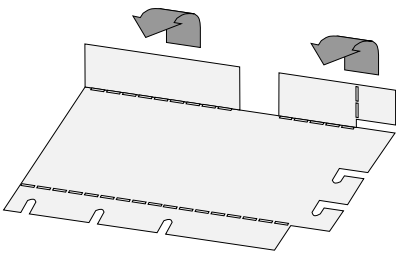
Follow the directions listed under "Accent Light Receiver Connection".

IF NOT USING AN ACCENT LIGHT

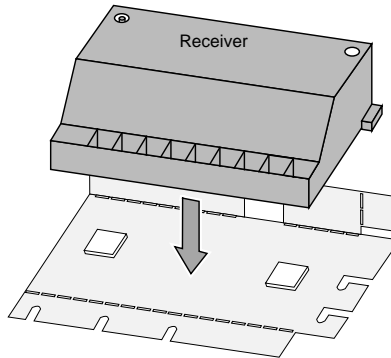
Secure the two white wires, making sure they do not contact the burner or any moving parts.

Receiver Installation - Sturbridge

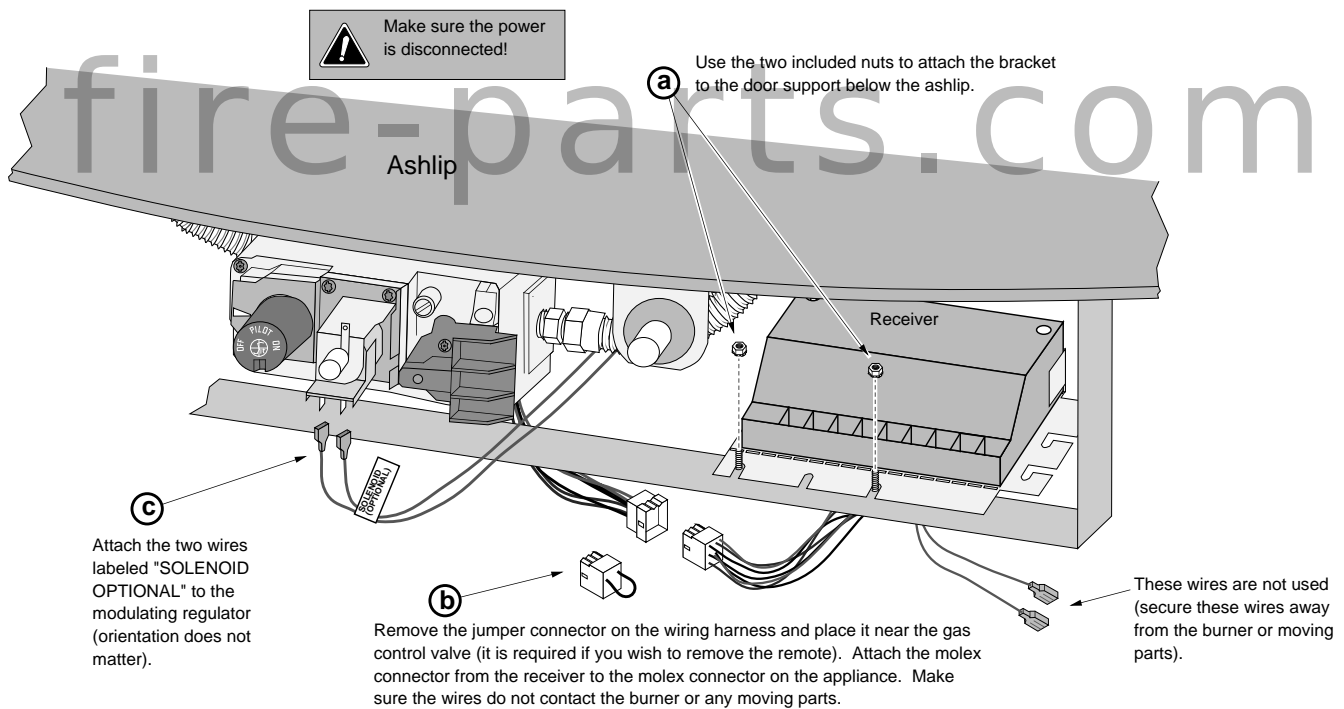
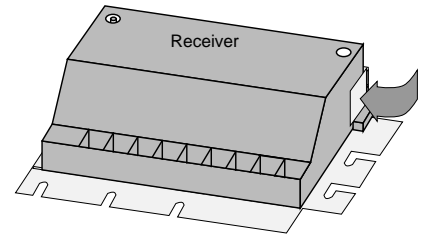
Bend the receiver bracket as shown below.



Attach the two pieces of double-sided tape to the bracket. Place the receiver as shown on top of the tape, making sure it is all the way back.



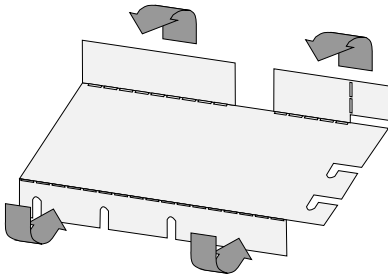
Bend the side tab inwards as shown below.



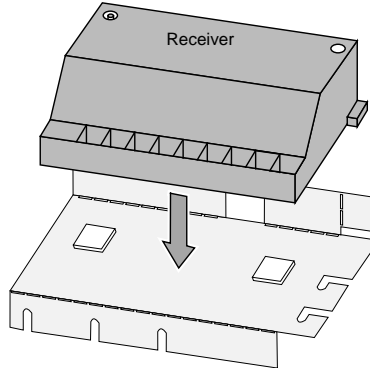
TRAVIS INDUSTRIES
HOUSE OF FIRE

Receiver Installation – Heritage

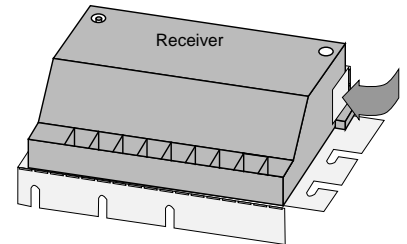
Bend the receiver bracket as shown below.




Attach the two pieces of double-sided tape to the bracket. Place the receiver as shown on top of the tape.



Bend the side tab inwards as shown below.



 Make sure the power is disconnected!

Remove the jumper connector on the wiring harness and place it near the gas control valve (it is required if you wish to remove the remote). Attach the molex connector from the receiver to the molex connector on the appliance. Make sure the wires do not contact the burner or any moving parts.

Attach the two wires labeled "SOLENOID OPTIONAL" to the modulating regulator (orientation does not matter).

Ⓒ

These wires are not used (secure these wires away from the burner or moving parts).

 3/8" Nutdriver

Ⓐ Use the two nuts on the back of the pedestal to secure the bracket to the back of the stove. You do not need to remove the nuts, simply loosen them and slide the bracket into place.

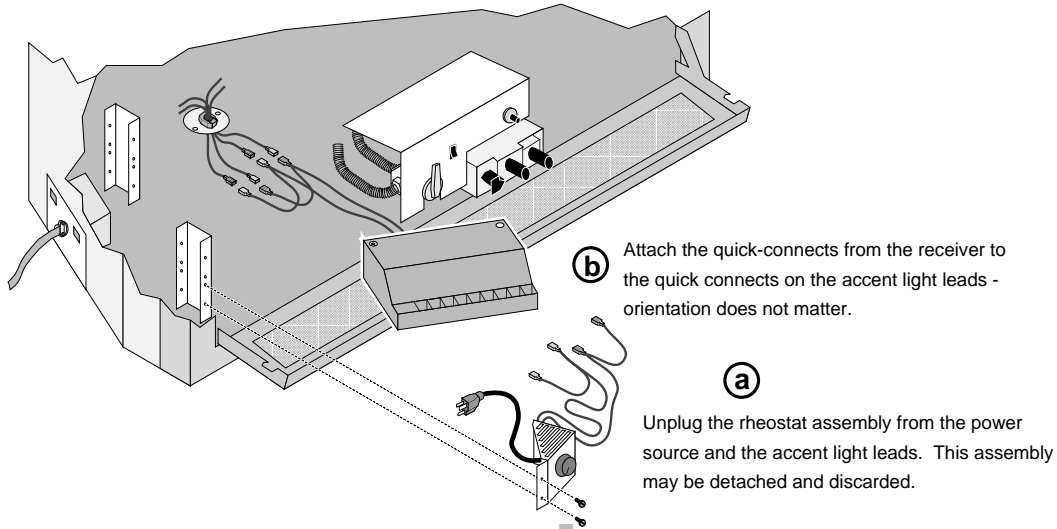


TRAVIS INDUSTRIES
HOUSE OF FIRE

Accent Light Receiver Connection

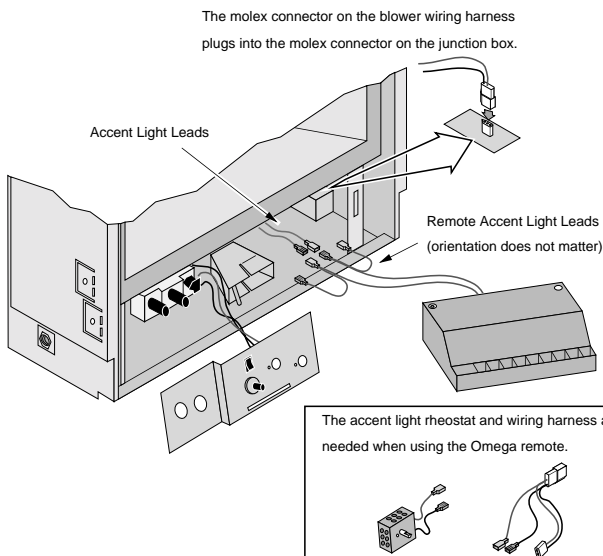
For those models using the accent light, follow the directions below to connect the accent light to the remote receiver. This will allow you to control the accent light with the remote control.

864 TRV, 864 HH, 864 ST, or 564 SS

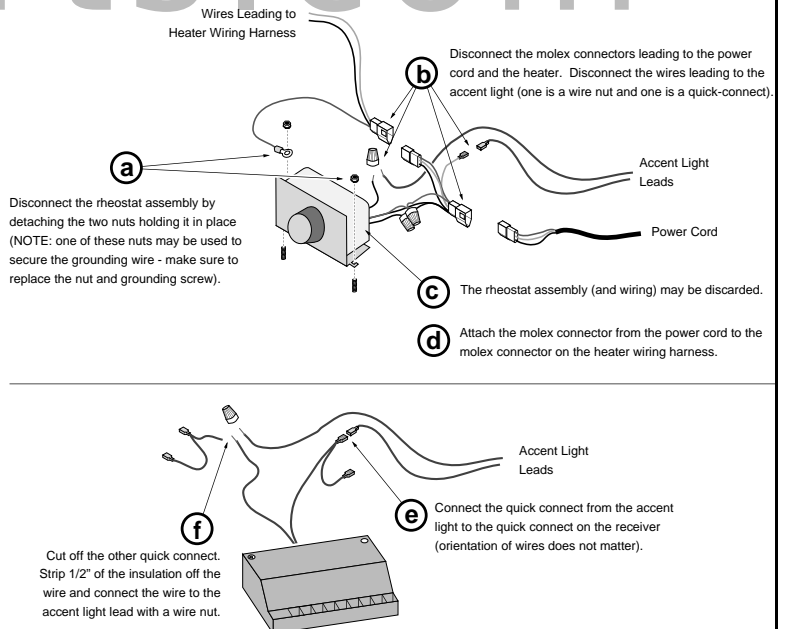


21 TRV

If using the accent light with an Omega remote, you will want to remove and discard the accent light rheostat and wiring harness. Plug the wiring harness (included with the blower) into the junction box on the fireplace. The leads from the accent light are connected to the leads from the Omega remote.



All Other Models



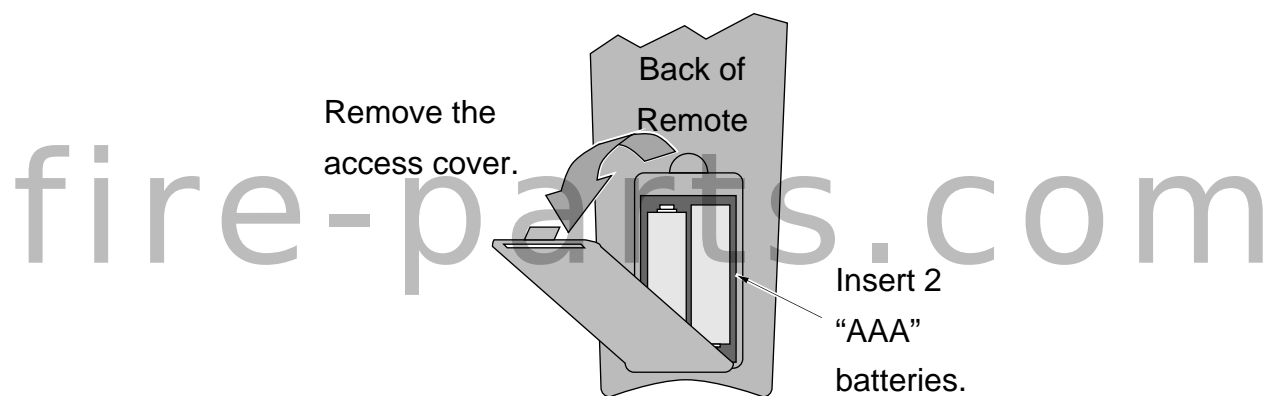
Operating Instructions (Omega Modulating Remote)

Before You Begin:

- Note:** The pilot flame must be lit, the gas control valve turned to "ON" and the on/off switch turned "OFF."
- Warning:** Read all of the safety precautions in the owner's manual included with your heater before using this remote control.
- Radio Range:** Be aware that factors in your home such as florescent lights, microwave ovens, and obstructions can affect radio range. Also, do not place the remote on a metal surface. Before you leave the fireplace unattended while in thermostat mode, test to make sure the fireplace can clearly receive signals from the remote. You can test the remote by turning the fireplace on and off from the location you plan on leaving the remote. See "Antenna Placement" in the installation instructions for details on improving radio reception.

Installing the Batteries

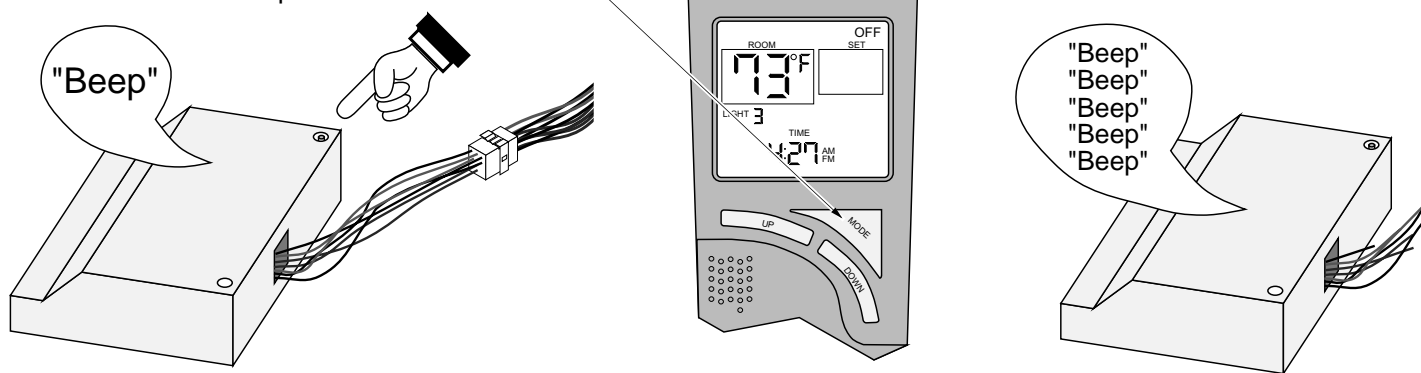
Remove the cover from the back of the transmitter and insert two "AAA" batteries as shown.



Calibrating the Remote to the Receiver

Each remote has a unique identification. To calibrate it to the receiver in the heater, follow the directions below.

- Ⓐ With the receiver plugged in, press this button until the receiver beeps.
- Ⓑ Press the "MODE" button on the remote.
- Ⓒ The remote will beep five times to indicate the receiver is calibrated.

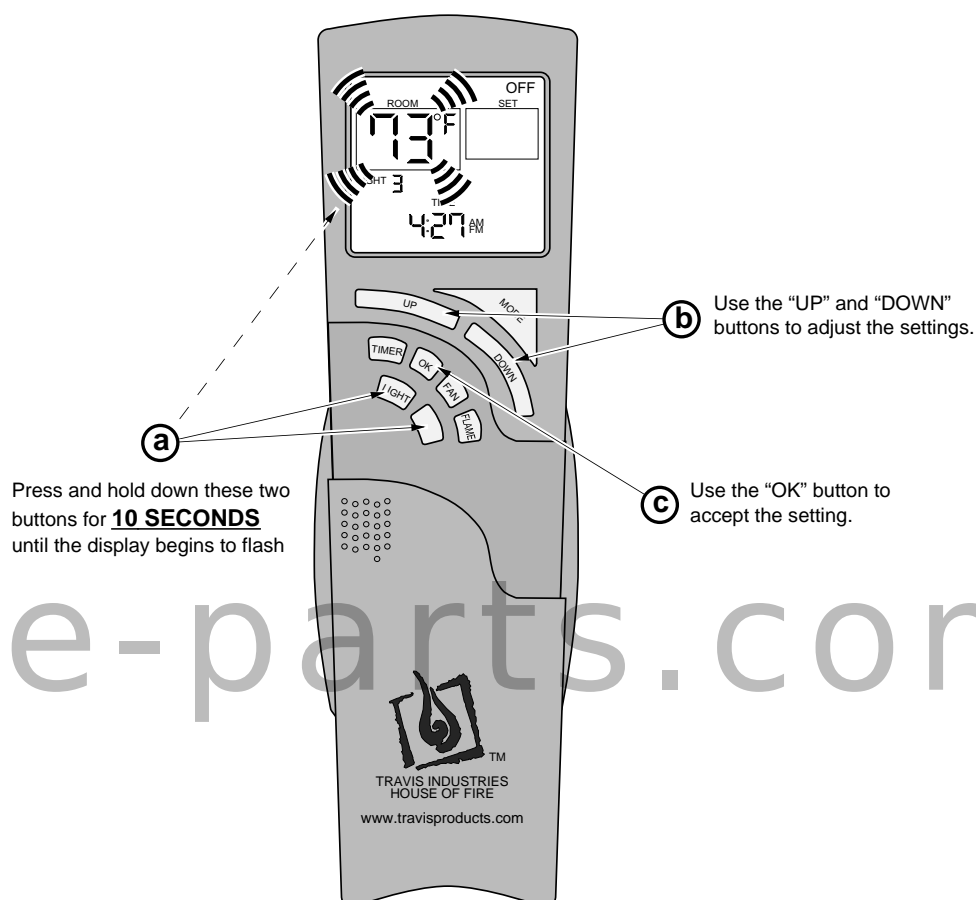


TRAVIS INDUSTRIES
HOUSE OF FIRE

Operating Instructions (Omega Modulating Remote)

Remote Set-Up

- 1 Follow step “a” shown below to enter set-up mode. **NOTE:** At any time you may exit set-up mode by pressing “OK” repeatedly.



- 2 Press the “UP” or “DOWN” button for each of the settings shown in the table below. When the desired setting is achieved, press “OK” to accept the setting.

Celcius / Fahrenheit	Set the remote to display Celcius (“C” will appear next to the temperature) or Fahrenheit (“F”).
Anticipator	The anticipator setting (also called the “lag” or “differential”) is used to keep the thermostat from turning the heater on and off repeatedly. This setting is set in degrees (S1, S2, S3). It determines at what point above or below the desired heat setting the thermostat will signal the heater to turn on or off. The higher the anticipator setting, the less frequently the heater will turn on and off. The default setting is S2 (+2° / -2°).
NG / LP	Change this to the fuel type being used.
Clock – Hour	Set this to the correct hour (make sure the AM / PM display is correct)
Clock- Minute	Set this to the correct minute.

Operating Instructions (Omega Modulating Remote)

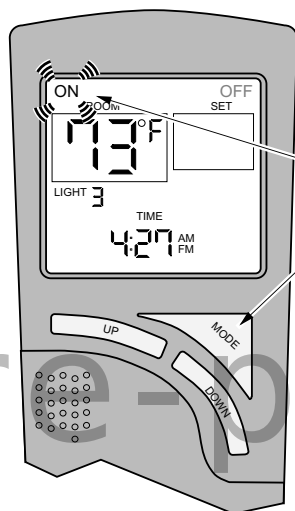
The Two Modes of Operation

The thermostat can be operated in the following two modes:

NOTE: The remote sends a verification signal to the receiver every fifteen minutes. If the transmitter is moved to a location out of range, or the batteries are dead, the heater will shut down after 2 hours unless the remote can re-establish contact with the receiver.

Manual ("ON" / "OFF") Use the remote to turn the heater on and off.

HINT: The heater will remain on continuously in manual mode until it is shut off. Use the timer function if you wish to have the heater shut off after a certain interval.



Press the "MODE" button to turn the heater on and off.

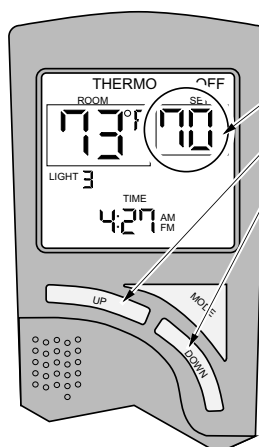
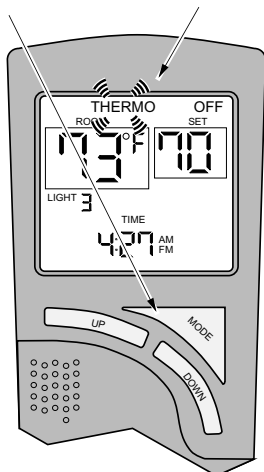


NOTE: when the word "THERMO" appears here, the remote is in thermostat mode.

Thermostat ("THERMO") This mode turns the heater on and off automatically to achieve a pre-set temperature.

To Start Thermostat Mode:

Press the "MODE" button until "THERMO" appears.



To Adjust the Target Temperature:

Use the "UP" and "DOWN" buttons to adjust the target temperature ("SET").

The heater will turn on and off to keep the room temperature near the target temperature.

Important Operational Note:

The thermostat will turn on and off based upon the Anticipator setting (see "Set-Up" for details).

Hint:

If your heater turns on and off frequently, adjust the flame height down slightly for a more consistent heat output.



TRAVIS INDUSTRIES
HOUSE OF FIRE

Operating Instructions (Omega Modulating Remote)

Heater Adjustments

Flame Height

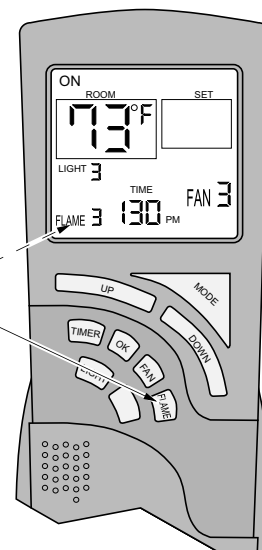
NOTE: The heater must be on for this feature to operate.

NOTE: The flame adjustment may take 5 to 10 seconds for a visible difference in flame size.

TO ADJUST FLAME HEIGHT

Press the "FLAME" button until the desired setting appears in the display.

- 1 = LOW
- 2 = MEDIUM
- 3 = HIGH



Fan Speed

NOTE: The fan will not turn on until the heater is up to temperature (it will also shut down once the heater has cooled).

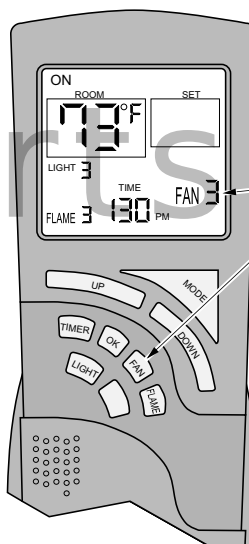
NOTE: When the heater is first started the default fan speed will be 1 ("LOW").

NOTE: The fan speed can not be changed unless the heater is on.

TO ADJUST FAN SPEED

Press the "FAN" button until the desired setting appears in the display.

- 1 = LOW
- 2 = MEDIUM
- 3 = HIGH
- OFF



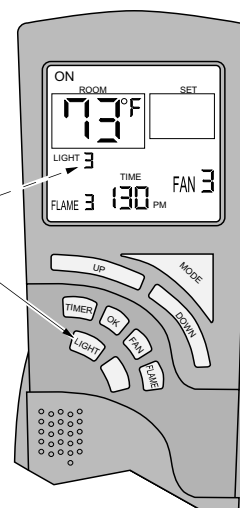
Accent Light

NOTE: The light will remain on whether the heater is on or off. Make sure to shut off the accent light to prevent the light bulb from burning out.

TO ADJUST ACCENT LIGHT

Press the "LIGHT" button until the desired setting appears in the display.

- 1 = LOW
- 2 = MEDIUM
- 3 = HIGH
- OFF



TRAVIS INDUSTRIES
HOUSE OF FIRE

Operating Instructions (Omega Modulating Remote)

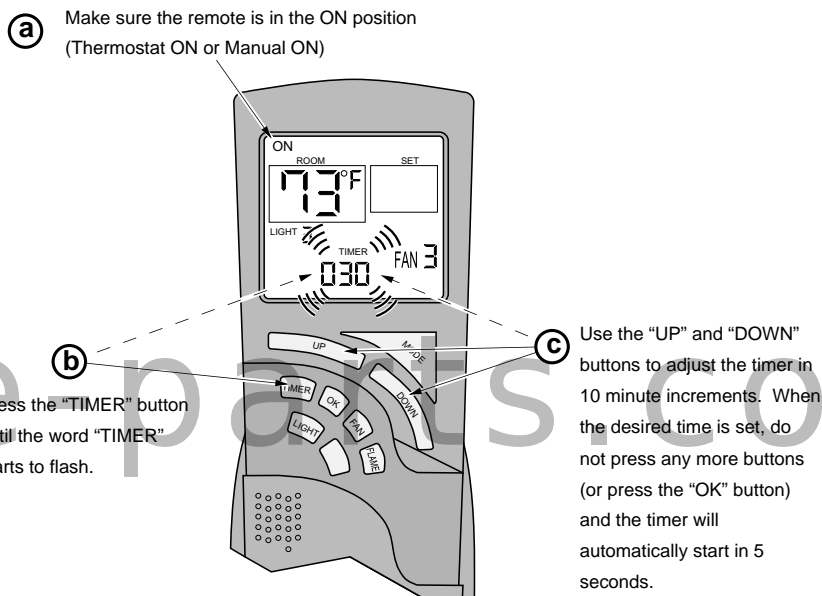
Additional Features

Timed This feature allows you to set the time you wish the heater to remain on (up to 3 hours).

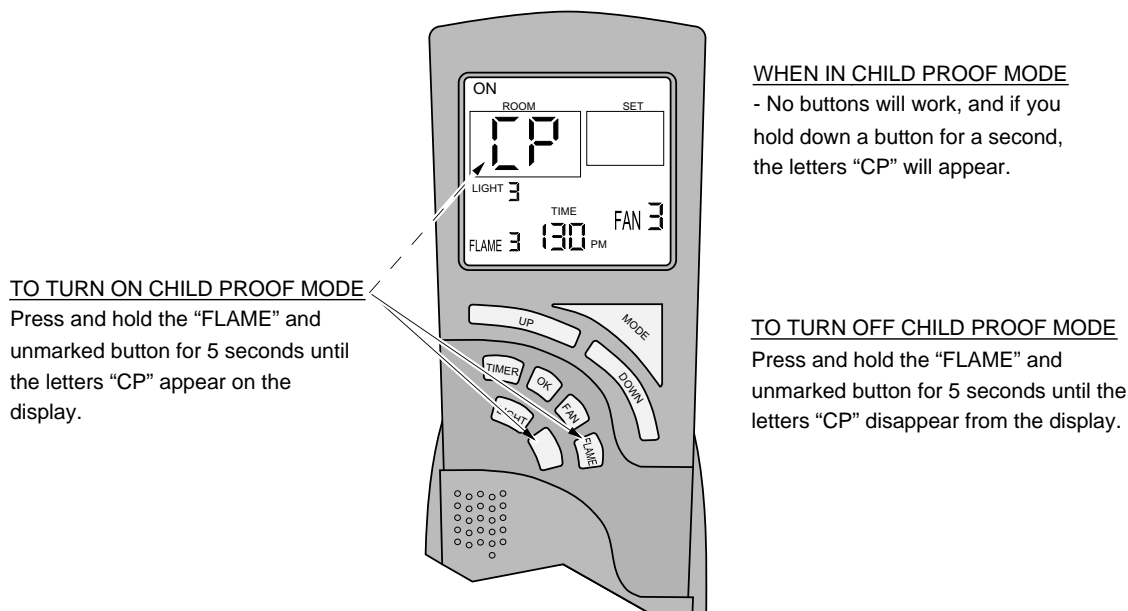
Timed Feature While in Manual Mode: The remote will turn the heater on for the allotted time, after which the heater will shut off.

Timed Feature While in Thermostat Mode: If the remote is in thermostat mode, the timer feature will only turn the heater on while the target temperature is higher than room temperature. After the allotted time passes, the remote will turn off and switch to manual mode.

NOTE: At any time if you wish to turn off timer, press the "TIMER" button.



Child Proof The child proof feature disables the remote transmitter, preventing un-intended operation.

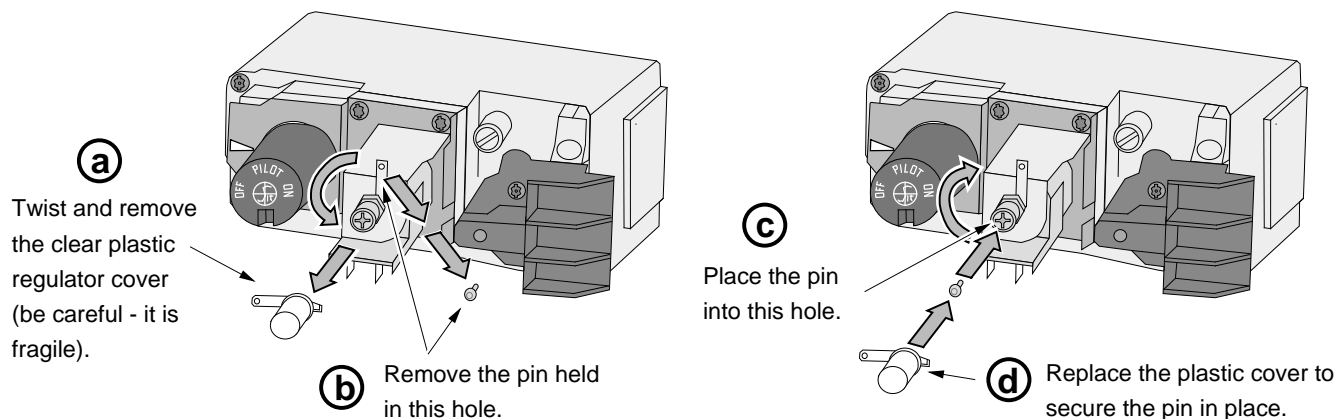


TRAVIS INDUSTRIES
HOUSE OF FIRE

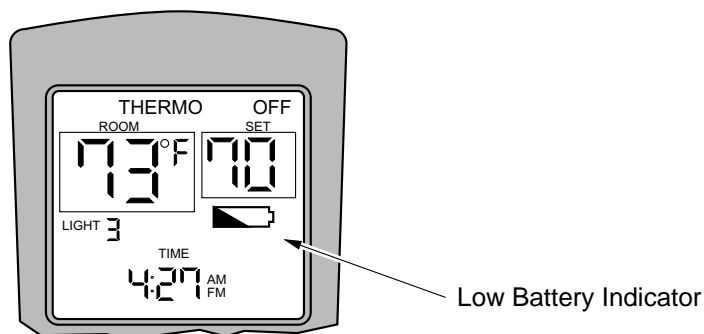
Operating Instructions (Omega Modulating Remote)

Additional Features (continued)

Power Outages Because the remote utilizes a modulating actuator on the flame height regulator, the flame height will go to 20% during a power outage. To over-ride this, and make the heater burn at 100%, follow the directions below. Use the switch on the heater to turn the heater on and off.



Low Battery Indicator The remote will display the following indicator when the batteries run low. This indicates the batteries have approximately 2 – 4 weeks of operation before the remote will no longer work.



Remote Failure

The remote sends a verification signal to the receiver every fifteen minutes. If the transmitter is moved to a location out of range, or the batteries are dead, the heater will shut down after 2 hours unless the remote can re-establish contact with the fireplace. If using this remote as a thermostat, remember to check the batteries often.

Thermal Safety

If the receiver (inside the fireplace or near the stove or insert) reaches a temperature of 170° F., it will shut down the heater and start beeping (4 beeps every 2 seconds). It will then remain off until the temperature lowers to 160° F. At that time the user may turn the heater on again.